

日薬連発第 805 号
2023 年 11 月 30 日

加盟団体 殿

日本製薬団体連合会

医薬品の一般的名称について

標記について、令和 5 年 11 月 27 日付け医薬薬審発 1127 第 1 号にて厚生労働省 医薬局 医薬品審査管理課長より通知がありました。（日薬連会長宛：医薬薬審発 1127 第 2 号）

つきましては、本件につき貴会会員に周知徹底いただきたく、ご配慮の程よろしくお願い申し上げます。

医薬審発 1127 第 2 号
令和 5 年 11 月 27 日

日本製薬団体連合会 会長 殿

厚生労働省医薬局医薬品審査管理課長
(公 印 省 略)

医薬品の一般的名称について

標記について別添写しのとおり、各都道府県衛生主管部（局）長宛に通知しましたので、貴会会員への周知方よろしくお願いいたします。



医薬薬審発 1127 第 1 号
令和 5 年 11 月 27 日

各都道府県衛生主管部（局）長 殿

厚生労働省医薬局医薬品審査管理課長
（ 公 印 省 略 ）

医薬品の一般的名称について

標記については、「医薬品の一般的名称の取扱いについて（平成 18 年 3 月 31 日薬食発第 0331001 号厚生労働省医薬食品局長通知）」等により取り扱っているところです。今般、我が国における医薬品の一般的名称（以下「JAN」という。）について、新たに別添のとおり定めたので、御了知の上、貴管下関係業者に周知方よろしく御配慮願います。

（参照）

「日本医薬品一般的名称データベース」<https://jpd.b.nihs.go.jp/jan/>

（別添の情報のうち、JAN 以外の最新の情報は、当該データベースの情報で対応することとしています。）

(別表2) INN に記載された品目の我が国における医薬品一般的名称

(平成 18 年 3 月 31 日薬食審査発第 0331001 号厚生労働省医薬食品局審査管理課長通知に示す別表 2)

登録番号 305-1-B6

JAN (日本名) : ザポメラン

JAN (英名) : Zapomeran

核酸配列

GAUGGGCGGC	GCAUGAGAGA	AGCCCAGACC	AAUUACCUAC	CCAAAAUGGA	50
GAAAGUUCAC	GUUGACAUCG	AGGAAGACAG	CCCAUUCUC	AGAGCUUUGC	100
AGCGGAGCUU	CCCGCAGUUU	GAGGUAGAAG	CCAAGCAGGU	CACUGAUAAU	150
GACCAUGCUA	AUGCCAGAGC	GUUUUCGCAU	CUGGCUUCA	AACUGAUCGA	200
AACGGAGGUG	GACCCAUCCG	ACACGAUCCU	UGACAUUGGA	AGUGCGCCCG	250
CCCGCAGAAU	GUAUUCUAAG	CACAAGUAUC	AUUGUAUCUG	UCCGAUGAGA	300
UGUGCGGAAG	AUCCGGACAG	AUUGUAUAAG	UAUGCAACUA	AGCUGAAGAA	350
AAACUGUAAG	GAAAUACUG	AUAAGGAAU	GGACAAGAAA	AUGAAGGAGC	400
UGGCCGCCGU	CAUGAGCGAC	CCUGACCUGG	AAACUGAGAC	UAUGUGCCUC	450
CACGACGACG	AGUCGUGUCG	CUACGAAGGG	CAAGUCGUG	UUUACCAGGA	500
UGUAUACGCC	GUCGACGGCC	CCACCAGCCU	GUACCACCAG	GCCAACAAGG	550
GCGUGAGGGU	GGCCUACUGG	AUCGGCUUCG	ACACCACACC	CUUCAUGUUC	600
AAGAACCUGG	CCGGCGCCUA	CCCCAGCUAC	AGCACCAACU	GGGCCGACGA	650
GACAGUGCUG	ACCGCCAGGA	ACAUCGGCCU	GUGCAGCAGC	GACGUGAUGG	700
AGAGGAGCCG	GAGGGGCAUG	AGCAUCCUGA	GGAAGAAGUA	CCUGAAGCCC	750
AGCAACAACG	UGCUGUUCAG	CGUGGGCAGC	ACCAUCUACC	ACGAGAAGAG	800
GGACCUGCUG	AGGAGCUGGC	ACCUGCCCAG	CGUGUCCAC	CUGAGGGGCA	850
AGCAGAACUA	CACCUGCAGG	UGCGAGACAA	UCGUGAGCUG	CGACGGCUAC	900
GUGGUGAAGA	GGAUCGCCAU	CAGCCCCGGC	CUGUACGGCA	AGCCCAGCGG	950
CUACGCCGCC	ACCAUGCACA	GGGAGGGCUU	CCUGUGCUGC	AAGGUGACCG	1000
ACACCCUGAA	CGGCGAGAGG	GUGAGCUUCC	CCGUGUGCAC	CUACGUGCCC	1050
GCCACCCUGU	GCGACCAGAU	GACCGGCAUC	CUGGCCACCG	ACGUGAGCGC	1100
CGACGACGCC	CAGAAGCUGC	UGGUGGGCCU	GAACCAGAGG	AUCGUGGUGA	1150
ACGGCAGGAC	CCAGAGGAAC	ACCAACACCA	UGAAGAACUA	CCUGCUGCCC	1200
GUGGUGGCC	AGGCCUUCGC	CAGGUGGGCC	AAGGAGUACA	AGGAGGACCA	1250
GGAGGACGAG	AGGCCCCUGG	GCCUGAGGGA	CCGACAGCUG	GUGAUGGGCU	1300

GCUGCUGGGC CUUCAGGCGG CACAAGAUCA CCAGCAUCUA CAAGAGGCC 1350
GACACCCAGA CCAUCAUCAA GGUGAACAGC GACUCCACA GCUUCGUGCU 1400
GCCCAGGAUC GGCAGCAACA CCCUGGAGAU CGGCCUGAGG ACCCGGAUCA 1450
GGAAGAUGCU GGAGGAGCAC AAGGAGCCCA GCCCUCUGAU CACCGCCGAG 1500
GACGUGCAGG AGGCCAAGUG CGCCGCCGAC GAGGCCAAGG AGGUGAGGGA 1550
GGCCGAGGAG CUGAGGGCCG CCCUGCCUCC CCUGGCCGCC GACGUGGAGG 1600
AGCCCACCCU GGAGGCCGAC GUGGACCUGA UGCUGCAGGA GGCCGGCGCC 1650
GGCAGCGUGG AGACACCCAG GGGCCUGAUC AAGGUGACCA GCUACGACGG 1700
CGAGGACAAG AUCGGCAGCU ACGCCGUGCU CAGCCUCAG GCCGUGCUGA 1750
AGUCCGAGAA GCUGAGCUGC AUCCACCCUC UGGCCGAGCA GGUGAUCGUG 1800
AUCACCCACA GCGGCAGGAA GGGCAGGUAC GCCGUGGAGC CCUACCACGG 1850
CAAGGUGGUG GUCCCCGAGG GCCACGCCAU CCCCUGGCAG GACUCCAGG 1900
CCCUGAGCGA GAGCGCCACC AUCGUGUAUA ACGAGAGGGA GUUCGUGAAC 1950
AGGUACCUGC ACCACAUCGC CACCCACGGC GGCGCCUGA ACACCGACGA 2000
GGAGUACUAC AAGACCGUGA AGCCAGCGA GCACGACGGC GAGUACCUGU 2050
ACGACAUCGA CAGGAAGCAG UGCGUGAAGA AGGAGCUGGU GACCGGCCUG 2100
GGCCUGACCG GCGAGCUGGU GGACCCUCCC UCCACGAGU UGCCUACGA 2150
GAGCCUGAGG ACCAGGCCCG CCGCUCCUA CCAGGUGCCC ACCAUCGGCG 2200
UGUACGGCGU GCCCGGCAGC GGCAAGAGCG GCAUCAUCAA GAGCGCCGUG 2250
ACCAAGAAGG ACCUGGUGU GAGCGCCAAG AAGGAGAACU GCGCCGAGAU 2300
CAUCAGGGAC GUGAAGAAGA UGAAGGGCCU GGACGUGAAC GCCAGGACCG 2350
UGGACAGCGU GCUCCUGAAC GGCUGCAAGC ACCCCGUGGA GACACUGUAU 2400
AUCGACGAGG CCUUCGCCUG CCACGCCGGC ACCCUGAGGG CCCUGAUCGC 2450
CAUCAUCAGG CCCAAGAAGG CCGUGCUGUG CGGCGACCCC AAGCAGUGCG 2500
GCUUCUCAA CAUGAUGUGC CUGAAGGUGC ACUUCAACCA CGAGAUCUGC 2550
ACCCAGGUGU UCCACAAGAG CAUCAGCAGG CGGUGCACCA AGAGCGUGAC 2600
CAGCGUGGUG AGCACCCUGU UCUACGACAA GAAGAUGAGG ACCACCAACC 2650
CCAAGGAGAC AAAGAUCGUG AUCGACACCA CCGGCAGCAC CAAGCCCAAG 2700
CAGGACGACC UGAUCCUGAC CUGCUUCAGG GGCUGGGUGA AGCAGCUGCA 2750
GAUCGACUAC AAGGGCAACG AGAUCAUGAC CGCCGCCGCU AGCCAGGGCC 2800
UGACCAGGAA GGGCGUGUAC GCCGUGAGGU ACAAGGUGAA CGAGAAUCCC 2850
CUGUACGCCC CUACCAGCGA GCACGUGAAC GUCCUGCUGA CCAGGACCGA 2900
GGACAGGAUC GUGUGGAAGA CCCUGGCCGG CGACCCUGG AUCAAGACCC 2950

UGACCGCCAA GUACCCCGGC AACUUCACCG CCACCAUCGA GGAGUGGCAG 3000
GCCGAGCACG ACGCCAUCAU GAGGCACAUC CUGGAGAGGC CCGACCCAC 3050
CGACGUGUUC CAGAACAAGG CCAACGUGUG CUGGGCCAAG GCCCUGGUGC 3100
CCGUGCUGAA GACCGCCGGC AUCGACAUGA CCACCGAGCA GUGGAACACC 3150
GUGGACUACU UCGAGACAGA CAAGGCCAC AGCGCCGAGA UCGUGCUGAA 3200
CCAGCUGUGC GUGAGGUUCU UCGGCCUGGA CCUGGACAGC GGCCUGUUA 3250
GCGCCCCUAC CGUGCCCCUG AGCAUCAGGA ACAACCACUG GGACAACAGC 3300
CCCAGCCCCA ACAUGUACGG CCUGAACAAAG GAGGUGGUGA GGCAGCUGAG 3350
CAGGCGGUAC CCUCAGCUGC CCAGGGCCGU GGCCACCGGC AGGGUGUACG 3400
ACAUGAACAC CGGCACCCUG AGGAACUACG ACCCCAGGAU CAACCUGGUG 3450
CCCGUGAACA GCGGCUGCC ACACGCCUG GUGCUGCACC ACAACGAGCA 3500
CCCUCAGAGC GACUUCAGCA GCUUCGUGAG CAAGCUGAAG GGCAGGACCG 3550
UGCUGGUGGU GGGCGAGAAG CUGAGCGUGC CCGCAAGAU GGUGGACUGG 3600
CUGAGCGACA GGCCGAGGC CACCUUCCGG GCCAGGCUGG ACCUGGGCAU 3650
CCCCGGCGAC GUGCCCAAGU ACGACAUCAU CUUCGUGAAC GUGAGGACCC 3700
CUUACAAGUA CCACCACUAC CAGCAGUGCG AGGACCACGC CAUCAAGCUG 3750
AGCAUGCUGA CCAAGAAGGC CUGCCUGCAC CUGAACCCCG GCGGCACCUG 3800
CGUGAGCAUC GGCUACGGCU ACGCCGACAG GGCCAGCGAG AGCAUCAUCG 3850
GCGCAUCGC CAGGCUGUUC AAGUUCAGCA GGGUGUGCAA GCCCAAGAGC 3900
AGCCUGGAGG AGACAGAGGU GCUGUUCGUG UUCAUCGGCU ACGACCGGAA 3950
GGCCAGGACC CACAACCCU ACAAGCUGAG CAGCACCCUG ACCAACAUCU 4000
ACACCGGCAG CAGGCUGCAC GAGGCCGGCU GCGCCCUAG CUACCACGUG 4050
GUGAGGGGCG ACAUCGCCAC CGCCACCGAG GGCGUGAUA UCAACGCCGC 4100
CAACAGCAAG GGCCAGCCCG GCGGCGGGGU GUGCGGCGCC CUGUAUAAGA 4150
AGUUCCCCGA GAGCUUCGAC CUGCAGCCA UCGAGGUGGG CAAGGCCAGG 4200
CUGGUGAAGG GCGCCGCCAA GCACAUAUC CACGCCGUGG GCCCAACUU 4250
CAACAAGGUG AGCGAGGUGG AGGGCGACAA GCAGCUGGCC GAGGCCUACG 4300
AGAGCAUCGC CAAGAUCGUG AACGACAACA ACUACAAGAG CGUGGCCAUC 4350
CCUCUGCUGA GCACCGGAU CUUCAGCGGC AACAAGGACA GGCUGACCCA 4400
GAGCCUGAAC CACCUGCUGA CCGCCUGGA CACCACCGAC GCCGACGUGG 4450
CCAUCUACUG CAGGGACAAG AAGUGGGAGA UGACCCUGAA GGAGGCCGUG 4500
GCCAGGCGGG AGGCCGUGGA GGAGAUCGC AUCAGCGACG ACAGCAGCGU 4550
GACGGAGCCC GACGCCGAGC UGGUGAGGU GCACCCCAAG AGCAGCCUGG 4600

CCGGCAGGAA GGGCUACAGC ACCAGCGACG GCAAGACCUU CAGCUACCUG 4650
GAGGGCACCA AGUUCCACCA GGCCGCCAAG GACAUCGCCG AGAUCAACGC 4700
CAUGUGGCCC GUGGCCACCG AGGCCAACGA GCAGGUGUGC AUGUAUAUCC 4750
UGGGCGAGAG CAUGAGCAGC AUCAGGAGCA AGUGCCCCGU GGAGGAGAGC 4800
GAGGCCAGCA CCCCUCCCAG CACCCUGCCC UGCCUGUGCA UCCACGCCAU 4850
GACCCCUGAG AGGGUGCAGC GGCUGAAGGC CAGCAGGCCC GAGCAGAUCA 4900
CCGUGUGCAG CAGCUUCCCU CUGCCCAAGU ACCGGAUCAC CGGCGUGCAG 4950
AAGAUCAGU GCAGCCAGCC CAUCCUGUUC AGCCCCAAGG UGCCCGCCUA 5000
CAUCCACCCC AGGAAGUACC UGGUGGAGAC ACCCCCCGUG GACGAGACAC 5050
CCGAGCCCAG CGCCGAGAAC CAGAGCACCG AGGGCACCCC UGAGCAGCCU 5100
CCCCUGAUCA CCGAGGACGA GACAAGGACC AGGACGCCCG AGCCCAUCAU 5150
CAUUGAGGAG GAAGAGGAGG ACAGCAUCAG CCUGCUGAGC GACGGCCCCA 5200
CCCACCAGGU GCUGCAGGUG GAGGCCGACA UCCACGGCCC UCCCAGCGUG 5250
AGCAGCUCCA GCUGGAGCAU CCCUCACGCC AGCGACUUCG ACGUGGACAG 5300
CCUGAGCAUC CUGGACACCC UGGAGGGCGC CAGCGUGACC AGCGGCGCCA 5350
CCAGCGCCGA GACAAACAGC UACUUCGCCA AGAGCAUGGA GUUCCUGGCC 5400
AGGCCCGUGC CCGCCCCUAG GACCGUGUUC AGGAACCCUC CCCACCCCGC 5450
CCCUAGGACC AGGACCCCUA GCCUGGCCCC UAGCAGGGCC UGCAGCAGGA 5500
CCAGCCUGGU GAGCACCCCU CCCGGCGUGA ACCGGGUGAU CACCAGGGAG 5550
GAGCUGGAGG CCCUGACCCC UAGCAGGACC CCUAGCAGGA GCGUGAGCAG 5600
GACCAGCCUG GUGAGCAACC CUCCGGCGU GAACCGGGUG AUCACCAGGG 5650
AGGAGUUCGA GGCCUUCGUG GCCCAGCAGC AAAGGCGGUU CGACGCCGGC 5700
GCCUACAUCU UCAGCAGCGA CACCGGCCAG GGCCACCUGC AGCAGAAGUC 5750
CGUGAGGCAG ACCGUGCUGA GCGAGGUGGU CCUGGAGAGG ACGGAGCUGG 5800
AGAUCAGCUA CGCCCUAGG CUGGACCAGG AGAAGGAGGA GCUGCUGAGG 5850
AAGAAGCUGC AGCUGAACCC CACCCUGCC AACAGGAGCA GGUACCAGAG 5900
CAGGAAGGUG GAGAACAUGA AGGCCAUCAC CGCCAGGCGG AUCCUGCAGG 5950
GCCUGGGCCA CUACCUGAAG GCCGAGGGCA AGGUGGAGUG CUACAGGACC 6000
CUGCACCCCG UGCCCCUGUA CUCCAGCUCC GUGAACAGGG CCUUCAGCAG 6050
CCCCAAGGUG GCCGUGGAGG CCUGCAACGC CAUGCUGAAG GAGAACUUCC 6100
CCACCGUGGC CAGCUACUGC AUCAUCCCCG AGUACGACGC CUACCUGGAC 6150
AUGGUGGACG GCGCCAGCUG CUGCCUGGAC ACCGCCAGCU UCUGCCCCGC 6200
CAAGCUGAGG AGCUUCCCCA AGAAGCACAG CUACCUGGAG CCCACCAUCA 6250

GGAGCGCCGU GCCCAGCGCC AUCCAGAACA CCCUGCAGAA CGUGCUGGCC 6300
GCCGCUACCA AGAGGAACUG CAACGUGACC CAGAUGAGGG AGCUGCCCGU 6350
GCUGGACAGC GCCGCCUUCA ACGUGGAGUG CUUCAAGAAG UACGCCUGCA 6400
ACAACGAGUA CUGGGAGACA UUCAAGGAGA ACCCCAUCAG GCUGACCGAG 6450
GAGAACGUGG UGAACUACAU CACCAAGCUG AAGGGCCCCA AGGCCGCCGC 6500
UCUGUUCGCC AAGACCCACA ACCUGAACAU GCUCCAGGAC AUCCCUAUGG 6550
ACAGGUUCGU GAUGGACCUG AAGAGGGACG UGAAGGUGAC CCCUGGCACC 6600
AAGCACACCG AGGAGAGGCC CAAGGUGCAG GUGAUCCAGG CCGCCGACCC 6650
UCUGGCCACC GCCUACCUGU GCGGCAUCCA CAGGGAGCUG GUGAGGCGGC 6700
UGAACGCCGU CCUGCUGCCC AACAUCCACA CCCUGUUCGA CAUGAGCGCC 6750
GAGGACUUCG ACGCCAUCAU CGCCGAGCAC UUCCAGCCCG GCGACUGCGU 6800
GCUGGAGACA GACAUCGCCA GCUUCGACAA GAGCGAGGAC GACGCUAUGG 6850
CCCUGACCGC CCUGAUGAUC CUGGAGGACC UGGGCGUGGA CGCCGAGCUG 6900
CUGACCCUGA UCGAGGCCGC CUUCGGCGAG AUCAGCAGCA UCCACCUGCC 6950
CACCAAGACC AAGUUCAAGU UCGGCGCCAU GAUGAAGUCC GGCAUGUUC 7000
UGACCCUGUU CGUGAACACC GUGAUCAACA UCGUGAUCGC CAGCAGGGUG 7050
CUGCGGGAGA GGCUGACCGG CAGCCCCUGC GCCGCCUUCA UCGGCGACGA 7100
CAACAUCGUG AAGGGCGUGA AGUCCGACAA GCUGAUGGCC GACAGGUGCG 7150
CCACCUGGCU GAACAUGGAG GUGAAGAUCA UCGACGCCGU GGUGGGCGAG 7200
AAGGCCCUU ACUUCUGCGG CGGCUUCAUC CUGUGCGACA GCGUGACCGG 7250
CACCGCCUGC AGGGUGGCCG ACCCUCUGAA GAGGCUGUUC AAGCUGGGCA 7300
AGCCCCUGGC CGCCGACGAC GAGCACGACG ACGAUAGGCG GAGGGCCUG 7350
CACGAGGAGA GCACCAGGUG GAACCGGGUG GGCAUCCUGA GCGAGCUGUG 7400
CAAGGCCGUG GAGAGCAGGU ACGAGACAGU GGGCACCAGC AUCAUCGUGA 7450
UGGCCAUGAC CACCCUGGCC AGCAGCGUCA AGUCCUUCAG CUACCUGAGG 7500
GGGGCCCCUA UAACUCUCUA CGGCUAACCU GAAUGGACUA CGACAUAGUC 7550
UAGUCCGCCA AGGCCGCCAC CAUGUUCGUG UUCCUGGUGC UGCUGCCCU 7600
GGUGUCUAGC CAGUGCGUGA ACCUGACCAC CAGGACCCAG CUGCCUCCCG 7650
CCUACACCAA CAGCUUCACC AGGGGCGUGU ACUACCCCGA CAAGGUGUUC 7700
AGGAGCAGCG UGCUGCACAG CACCCAGGAC CUGUUCUGC CCUUCUUCAG 7750
CAACGUGACC UGGUCCACG CCAUCCACGU GAGCGGCACC AACGGCACCA 7800
AGAGGUUCGA CAACCCGUG CUGCCCUUCA ACGACGGCGU GUACUUCGCC 7850
AGCACCGAGA AGUCCAACAU CAUCAGGGGC UGGAUCUUCG GCACCACCU 7900

GGACAGCAAG ACCCAGAGCC UGCUGAUCGU GAACAACGCC ACCAACGUGG 7950
UGAUCAAGGU GUGCGAGUUC CAGUUCUGCA ACGACCCCUU CCUGGGCGUG 8000
UACUACCACA AGAACAACAA GAGCUGGAUG GAGAGCGAGU UCAGGGUGUA 8050
CUCCAGCGCC AACAAUCUGCA CCUUCGAGUA CGUGAGCCAG CCCUUCUGA 8100
UGGACCUGGA GGGCAAGCAG GGCAACUUCA AGAACCUGAG GGAGUUCGUG 8150
UUCAAGAACA UCGACGGCUA CUUCAAGAUC UACAGCAAGC ACACCCCUAU 8200
CAACCUGGUG AGGGACCUGC CCCAGGGCUU CAGCGCCUG GAGCCCUGG 8250
UGGACCUGCC CAUCGGCAUC AACAUCCACCA GGUUCCAGAC CCUGCUGGCC 8300
CUGCACAGGA GCUACCUGAC CCCUGGCGAC AGCAGCUCCG GCUGGACCGC 8350
CGGCGCCGCC GCUUACUACG UGGGCUACCU GCAGCCAGG ACCUUCUGC 8400
UGAAGUACAA CGAGAACGGC ACCAUCACCG ACGCCGUGGA CUGCGCCUG 8450
GACCUCUGA GCGAGACAAA GUGCACCCUG AAGUCCUUA CCGUGGAGAA 8500
GGGCAUCUAC CAGACCAGCA ACUUCAGGGU GCAGCCACC GAGAGCAUCG 8550
UGAGGUUCCC CAACAUCACC AACCUGUGCC CCUUCGGCGA GGUGUUAAC 8600
GCCACCAGGU UCGCCAGCGU GUACGCCUGG AACAGGAAGA GGAUCAGCAA 8650
CUGCGUGGCC GACUACAGCG UGCUGUAUAA CAGCGCCAGC UUCAGCACCU 8700
UCAAGUGCUA CGGCGUGAGC CCCACCAAGC UGAACGACCU GUGCUUCACC 8750
AACGUGUACG CCGACAGCUU CGUGAUCAGG GCGGACGAGG UGAGGCAGAU 8800
CGCCCCUGGC CAGACCGGCA AGAUCGCCGA CUACAACUAC AAGCUGCCCG 8850
ACGACUUCAC CGGCGUGGUG AUCGCCUGGA ACAGCAACAA CCUGGACAGC 8900
AAGGUGGGCG GCAACUACAA CUACCUGUAC CGGCUGUUA GAAAGAGCAA 8950
CCUGAAGCCC UUCGAGAGGG ACAUCAGCAC CGAGAUCUAC CAGGCCGGCA 9000
GCACCCCUUG CAACGGCGUG GAGGGCUUCA ACUGCUACUU CCCUCUGCAG 9050
AGCUACGGCU UCCAGCCCAC CAACGGCGUG GGCUACCAGC CCUACAGGGU 9100
GGUGGUCCUG AGCUUCGAGC UGCUGCACGC CCCUGCCACC GUGUGCGGCC 9150
CCAAGAAGUC CACCAACCUG GUGAAGAACA AGUGCGUGAA CUUCAACUUC 9200
AACGGCCUGA CCGGCACCGG CGUGCUGACC GAGAGCAACA AGAAGUCCU 9250
GCCCUUCCAG CAGUUCGGCA GGGACAUCGC CGACACCACC GACGCCGUGA 9300
GGGACCCUCA GACCCUGGAG AUCCUGGACA UCACCCCUUG CAGCUUCGGC 9350
GGCGUGAGCG UGAUCACCCC UGGCACCAAC ACCAGCAACC AGGUGGCCGU 9400
GCUGUACCAG GCGGUGAACU GCACCGAGGU GCCCGUGGCC AUCCACGCCG 9450
ACCAGCUGAC CCCUACCUGG AGGGUGUACU CCACCGGCAG CAACGUGUUC 9500
CAGACCAGGG CCGGCUGCCU GAUCGGCGCC GAGCACGUGA ACAACAGCUA 9550

CGAGUGCGAC AUCCCCAUCG GCGCCGGCAU CUGCGCCAGC UACCAGACCC 9600
AGACCAACAG CCCCGGGAGC GCCAGCAGCG UGGCCAGCCA GAGCAUCAUC 9650
GCCUACACCA UGAGCCUGGG CGCCGAGAAC AGCGUGGCCU ACAGCAACAA 9700
CAGCAUCGCC AUCCCCACCA ACUUCACCAU CAGCGUGACC ACCGAGAUC 9750
UGCCCUGAG CAUGACCAAG ACCAGCGUGG ACUGCACCAU GUAUAUCUGC 9800
GGCGACAGCA CCGAGUGCAG CAACCUGCUG CUCCAGUACG GCAGCUUCUG 9850
CACCCAGCUG AACAGGGCCC UGACCCGGCAU CGCCGUGGAG CAGGACAAGA 9900
ACACCCAGGA GGUGUUCGCC CAGGUGAAGC AGAUCUACAA GACCCCUCCC 9950
AUCAAGGACU UCGGCGGCUU CAACUUCAGC CAGAUCUGC CCGACCCAG 10000
CAAGCCCAGC AAGAGGAGCU UCAUCGAGGA CCUGCUGUUC AACAAAGGUGA 10050
CCCUGGCCGA CGCCGGCUUC AUCAAGCAGU ACGGCGACUG CCUGGGCGAC 10100
AUCGCCGCCA GGGACCUGAU CUGCGCCCAG AAGUUAACG GCCUGACCGU 10150
GCUGCCUCCC CUGCUGACCG ACGAGAUGAU CGCCAGUAC ACCAGCGCCC 10200
UGCUGGCCGG CACCAUCACC AGCGGCUGGA CCUUCGGCGC CGGCGCCGCC 10250
CUGCAGAUCC CCUUCGCCAU GCAGAUGGCC UACAGGUUCA ACGGCAUCGG 10300
CGUGACCCAG AACGUGCUGU ACGAGAACCA GAAGCUGAUC GCCAACCCAGU 10350
UCAACAGCGC CAUCGGCAAG AUCCAGGACA GCCUGAGCAG CACCGCCAGC 10400
GCCCUGGGCA AGCUGCAGGA CGUGGUGAAC CAGAACGCC AGGCCUGAA 10450
CACCCUGGUG AAGCAGCUGA GCAGCAACUU CGGCGCCAUC AGCAGCGUGC 10500
UGAACGACAU CCUGAGCAGG CUGGACCCAC CCGAGGCCGA GGUGCAGAU 10550
GACAGGCUGA UCACCGGCAG GCUGCAGAGC CUGCAGACCU ACGUGACCCA 10600
GCAGCUGAUC AGGGCCGCCG AGAUCAGGGC CAGCGCCAAC CUGGCCGCCA 10650
CCAAGAUGAG CGAGUGCGUG CUGGGCCAGA GCAAGAGGGU GGACUUCUGC 10700
GGCAAGGGCU ACCACCUGAU GAGCUUCCU CAGAGCGCCC CUCACGGCGU 10750
GGUGUUCUG CACGUGACCU ACGUGCCCGC CCAGGAGAAG AACUUCACCA 10800
CAGCCCUUGC CAUCUGCCAC GACGGCAAGG CCCACUUCCC CAGGGAGGGC 10850
GUGUUCGUGA GCAACGGCAC CCACUGGUUC GUGACCCAGA GGAACUUCUA 10900
CGAGCCCCAG AUCAUCACCA CCGACAACAC CUUCGUGAGC GGCAACUGCG 10950
ACGUGGUGAU CGGCAUCGUG AACAAACCG UGUACGACCC UCUGCAGCCC 11000
GAGCUGGACA GCUUCAAGGA GGAGCUGGAC AAGUACUUA AGAACCACAC 11050
CAGCCCCGAC GUGGACCUGG GCGACAUCAG CGGCAUCAAC GCCAGCGUGG 11100
UGAACAUCCA GAAGGAGAUC GACAGGCUGA ACGAGGUGGC CAAGAACCUG 11150
AACGAGAGCC UGAUCGACCU GCAGGAGCUG GGCAAGUACG AGCAGUACAU 11200

CAAGUGGCC UGGUACAUCU GGCUGGGCUU CAUCGCCGGC CUGAUCGCCA 11250
 UCGUGAUGGU GACCAUCAUG CUGUGCUGCA UGACCAGCUG CUGCAGCUGC 11300
 CUGAAGGGCU GCUGCAGCUG CGGCAGCUGC UGCAAGUUCG ACGAGGACGA 11350
 CAGCGAGCCC GUGCUGAAGG GCGUGAAGCU GCACUACACC UAAACUCGAG 11400
 UAUGUUACGU GCAAAGGUGA UUGUCACCCC CCGAAAGACC AUAUUGUGAC 11450
 ACACCCUCAG UAUCACGCC AAACAUUUAC AGCCGCGGUG UCAAAAACCG 11500
 CGUGGACGUG GUUACAUC CUGCUGGGAG GAUCAGCCGU AAUUAUUUA 11550
 AUUGGCUUGG UGCUGGCUAC UAUUGUGGCC AUGUACGUGC UGACCAACCA 11600
 GAAACAUAU UGAAUACAGC AGCAAUUGGC AAGCUGCUUA CAUAGAACUC 11650
 GCGGCGAUUG GCAUGCCGCC UUAUUUUUUU UAUUUUUUUU UUUCUUUUCU 11700
 UUUCCGAAUC GGAUUUUGUU UUUAAUUUUU CAAAAAAAAA AAAAAAAAAA 11750
 AAAAAUCUA GAAAAAAAAA AAAAAAAAAA AAAAAAAAAA AAAAAAAAAA 11800
 AAAAAAAAAA AAAAAAAAAA AAAAAAAAAA AAAAAAAAAA AAAAAAAAAA 11850
 AAAAAAAAAA A 11861

A = アデノシン ; C = シチジン ; G = グアノシン ; U = ウリジン

1-3 : 5'キャップ構造部分

4-45 : 5'非翻訳領域 (16-45 : ベネズエラ馬脳炎ウイルス遺伝子 5'非翻訳領域由来の配列)

46-7527 : ベネズエラ馬脳炎ウイルス RNA 依存性 RNA ポリメラーゼの翻訳領域 (46-48 : 開始コドン ; 7525-7527 : 終止コドン)

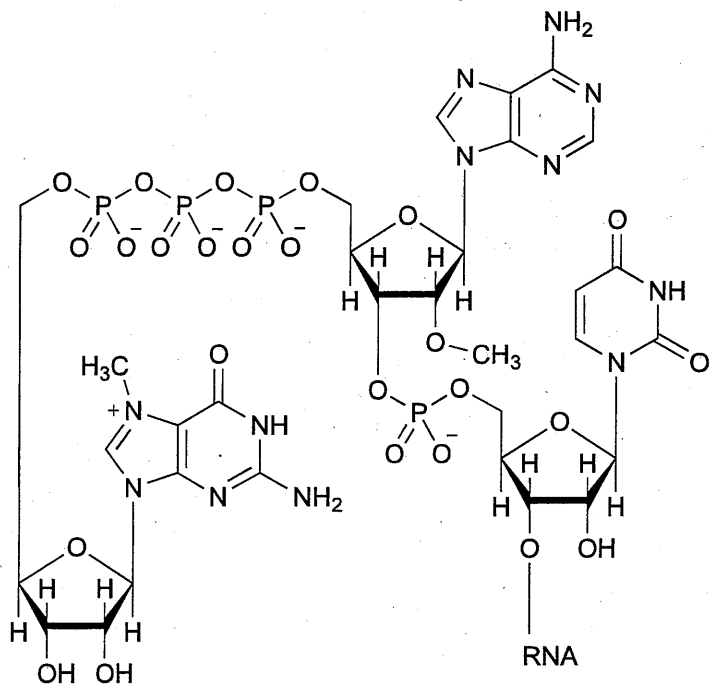
7528-7571 : intergenic region (サブゲノム RNA 産生に関わるプロモーター配列の一部を含む)

7572-11393 : SARS-CoV-2 のスパイクタンパク質類縁体の翻訳領域 (7572-7574 : 開始コドン ; 7575-7610 : SARS-CoV-2 スパイクタンパク質のシグナルペプチド ; 11391-11393 : 終止コドン)

11394-11731 : 3'非翻訳領域 (ベネズエラ馬脳炎ウイルス遺伝子 3'非翻訳領域由来の配列)

11732-11861 : ポリ A 転写スリップ

5'キャップ構造部分



ザポメランは、ベネズエラ馬脳炎ウイルス RNA レプリカーゼ (nsP1, nsP2, nsP3, nsP4) 及び SARS-CoV-2 のスパイクタンパク質類縁体 (D614G, R682G, R683S, R685S, K986P, V987P) 全長をコードする自己複製型 mRNA である。ザポメランは、5'キャップ構造、サブゲノムプロモーター配列、及びポリ A 配列を含む、11861 個のヌクレオチド残基からなる 1 本鎖 RNA である。

Zapomeran is a self-replicating mRNA encoding Venezuelan equine encephalitis virus RNA replicase (nsP1, nsP2, nsP3, nsP4) and full length of spike protein analog (D614G, R682G, R683S, R685S, K986P, V987P) of SARS-CoV-2. Zapomeran is a single-stranded RNA consisting of 11861 nucleotide residues including the 5' cap structure, subgenomic promoter and poly A sequence.

※ JAN 以外の情報は、参考として掲載しました。